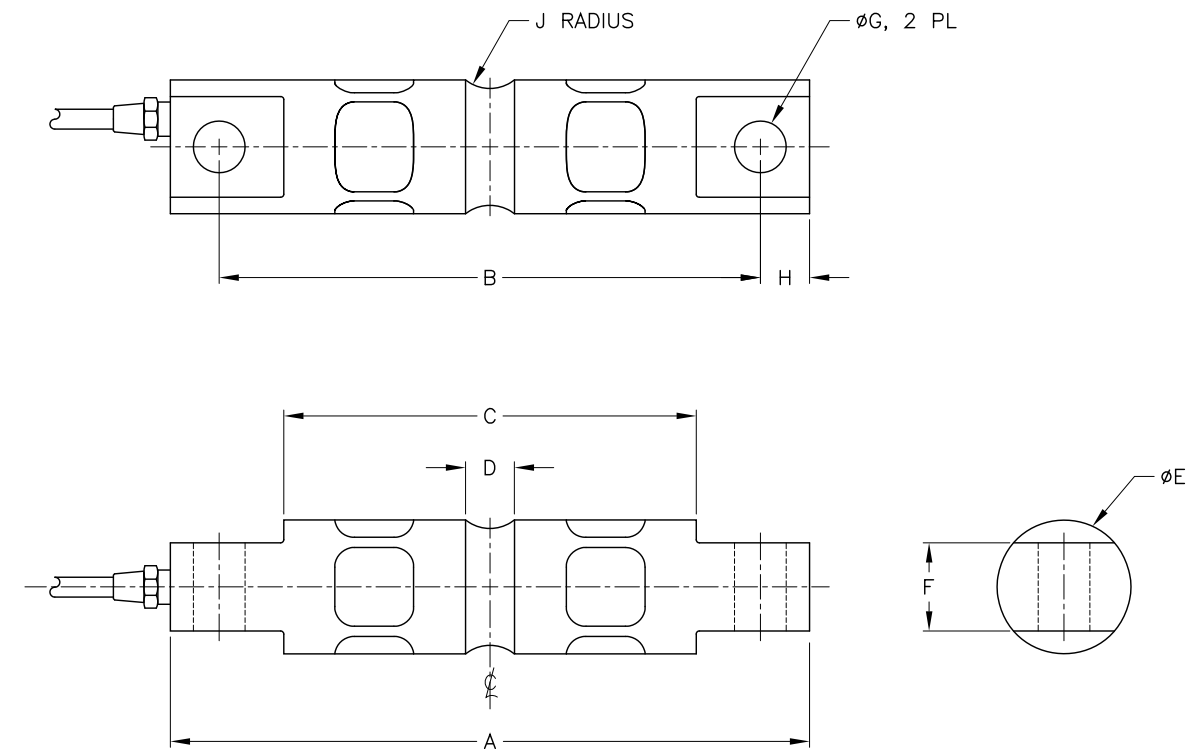


DIMENSIONS— INCHES & [mm]

CAPACITY LBS [KN]	MODEL NUMBER PLATED ALLOY STEEL	MODEL NUMBER STAINLESS STEEL	A	B	C	D	øE	F	øG	H	J
5 KLB [2.2MT]	DSB01C-AS-5KLB	DSB01C-SS-5KLB	8.12 [206.2]	6.88 [174.6]	5.24 [133.1]	.62 [15.7]	1.70 [43.2]	1.12 [28.4]	.66 [16.7]	.62 [15.7]	.50 [12.7]
10 KLB [4.5MT]	DSB01C-AS-10KLB	DSB01C-SS-10KLB									
20 KLB [9.1MT]	DSB01C-AS-20KLB	DSB01C-SS-20KLB	8.12 [206.2]	6.88 [174.6]	5.24 [133.1]	.84 [21.3]	1.95 [49.5]	1.12 [28.4]	.66 [16.7]	.62 [15.7]	.50 [12.7]
30 KLB [13.6MT]	DSB01C-AS-30KLB	DSB01C-SS-30KLB									
50 KLB [22.7MT]	DSB01C-AS-50KLB	DSB01C-SS-50KLB	10.25 [260.4]	8.50 [215.9]	6.50 [165.1]	1.00 [25.4]	3.00 [76.2]	2.34 [60.2]	1.06 [26.9]	.88 [22.4]	1.00 [25.4]
60 KLB [27.2MT]	DSB01C-AS-60KLB	DSB01C-SS-60KLB									
75 KLB [34MT]	DSB01C-AS-75KLB	DSB01C-SS-75KLB									
100 KLB [45.3MT]	DSB01C-AS-100KLB	DSB01C-SS-100KLB	11.25 [285.8]	9.50 [241.3]	7.49 [190.2]	1.22 [31.0]	3.50 [88.9]	2.50 [63.5]	1.06 [26.9]	.88 [22.4]	1.50 [38.1]
150 KLB [68MT]	DSB01C-AS-150KLB	DSB01C-SS-150KLB	11.25 [285.8]	9.50 [241.3]	7.49 [190.2]	1.22 [31.0]	3.90 [99.1]	2.80 [71.1]	1.06 [26.9]	.88 [22.4]	1.50 [38.1]
200 KLB [90.7MT]	DSB01C-AS-200KLB	DSB01C-SS-200KLB	16.10 [408.9]	13.00 [330.3]	10.00 [254.0]	1.25 [31.7]	5.38 [136.6]	4.60 [116.8]	1.56 [39.6]	1.55 [39.4]	2.00 [50.8]
250 KLB [113.4MT]	DSB01C-AS-250KLB	DSB01C-SS-250KLB									

REV.	ECO/DDC	DESCRIPTION	DATE	DRAFT	CHECK	APV'D
A	----	RELEASED.	10-27-14	V.J.C.	N.H.S.	E.J.
B	11796	REVISED PER ECN.	01-20-16	V.J.C.	L.E.G.	V.J.C.



7. LOAD SENSOR OPERATING TEMPERATURE RATING IS -35°C TO +65°C. USAGE OF LOAD SENSOR AT TEMPERATURES BELOW -35°C REQUIRES THAT THE LOAD SENSOR AND CABLE BE TEMPERATURE CONTROLLED.
6. LOAD SENSOR IS CONSTRUCTED WITH NICKEL PLATED ALLOY STEEL OR STAINLESS STEEL.
5. CABLE IS SHIELDED, 6 CONDUCTOR. CABLE SHIELD IS FLOATING. CABLE LENGTH IS 30 FEET [9.1 METERS].
4. C2 WIRE COLOR CODE FLAG LABEL IS LOCATED APPROXIMATELY 10 INCHES [254MM] FROM END OF CABLE.

EXCITATION +	RED
EXCITATION -	BLACK
SIGNAL +	GREEN
SIGNAL -	WHITE
C2 +	GRAY
C2 -	VIOLET
SHIELD	YELLOW
3. CABLE WIRE ENDS ARE STRIPPED BACK APPROXIMATELY 0.5 INCHES [12.7MM] AND TINNED. CABLE JACKET IS STRIPPED BACK 5 INCHES [127MM] MAXIMUM.
2. THIS DRAWING IS SUBJECT TO CHANGE WITHOUT NOTICE.
1. RATED OUTPUT: 3mV/V ±0.003.

NOTES: UNLESS OTHERWISE SPECIFIED

PROPRIETARY NOTICE
ALL DATA AND INFORMATION CONTAINED IN OR DISCLOSED BY THIS DOCUMENT IS CONFIDENTIAL AND PROPRIETARY INFORMATION OF HARDY PROCESS SOLUTIONS INC. AND ALL RIGHTS THEREIN ARE EXPRESSLY RESERVED. BY ACCEPTING THIS MATERIAL THE RECIPIENT AGREES THAT THIS MATERIAL AND THE INFORMATION CONTAINED THEREIN IS HELD IN CONFIDENCE AND IN TRUST AND SHALL NOT BE USED, COPIED, REPRODUCED IN WHOLE OR IN PART, NOR ITS CONTENTS REVEALED IN ANY MANNER TO OTHERS, EXCEPT TO MEET THE SPECIFIC PURPOSE FOR WHICH IT WAS DELIVERED.

ITEM	QTY	0588-0166	OUTLINE DRAWING, LOAD SENSOR MOUNT, DSB01C SERIES	COMMENTS
PARTS LIST				
UNLESS OTHERWISE SPECIFIED DIMENSIONS ARE IN INCH [MM]		CONTRACT NO.		
TOLERANCES ARE:		APPROVALS		
FRACTIONS: N/A		DRAWN	DATE	OUTLINE DRAWING, LOAD SENSOR, DSB01C SERIES
DECIMALS: .XX = ±0.03 [.8]		V. CHULA	10-27-14	
.XXX = ±0.010 [.25]		CHECKED	DATE	
ANGLES: ±0°, 30°		N. SCHERRER	10-27-14	
MATERIAL		APPROVED	DATE	
FINISH		E. JAMES	10-27-14	
DO NOT SCALE DRAWING		ISSUED	DATE	SIZE
		V. CHULA	10-27-14	FSCM
		PRODUCTION	DATE	DRAWING NO.
				D
				21316
				0588-0166
				REV. B
				FILE NAME: 588166B1.DWG
				SCALE: NONE
				SHEET 1 OF 1

